



# Caledonian

## Railway Cables

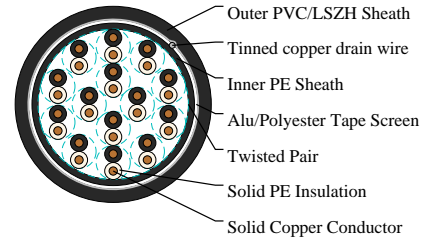
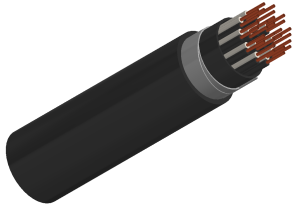
www.caledonian-cables.com

marketing@caledonian-cables.com

### ZPGU Local Signalling Cables (Ordinary Non-Electrified Lines)

1.13mm Conductor, 2.3 Insulated Wire

RS/ZPGU-2Y2Y(L)Y-14P1S



### APPLICATIONS

The cables are designed for internal connection inside cabling of equipment shelters along the trackside. The shielded cables are suitable for local circuits.

### STANDARDS

SNCF CT 445

NF F 55-698

### VOLTAGE RATING

750V DC/450V AC

### CABLE CONSTRUCTION

Conductors: Class 1 solid copper, 1.0 mm sq nominal cross section area.

Insulation: Solid polyethylene.

Cabling Element: Each two conductors are twisted together to form a pair.

Inner Sheath: PE.

Screen: Aluminium/Polyethylene tape screen

Drain Wire: Tinned copper drain wire.

Outer Sheath: PVC/LSZH.

### PHYSICAL AND THERMAL PROPERTIES

Minimum Bending Radius: 8xOD (static); 16xOD (dynamic)

Temperature Range: -40°C to +70°C (during operation); -20°C to +50°C (during installation)

### Electrical Properties

Electrical Characteristics at 20°C:

Nominal Conductor Diameter: 1.13 mm

Nominal Cross Section Area: 1 mm sq

Maximum Conductor Resistance (DC): 18.1 Ω/km

Maximum Mutual Capacitance @1000Hz (AC) : 55 nF/km



**Caledonian**

Railway Cables

[www.caledonian-cables.com](http://www.caledonian-cables.com)

[marketing@caledonian-cables.com](mailto:marketing@caledonian-cables.com)

Operating Voltage:750V

### DIMENSION AND PARAMETERS

No. of Pairs	Conductor Diameter	Nominal Diameter over Insulation	Nominal Inner Sheath Thickness	Nominal Outer Sheath Thickness	Nom. Overall Diameter	Approx. Weight
	mm	mm	mm	mm	mm	kg/km
14	1.13	2.3	1.2	1.8	21.3	532



Buried in Ground



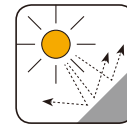
Laid In Ducts



Mineral Oil Resistant



Rated voltage



UV Resistant